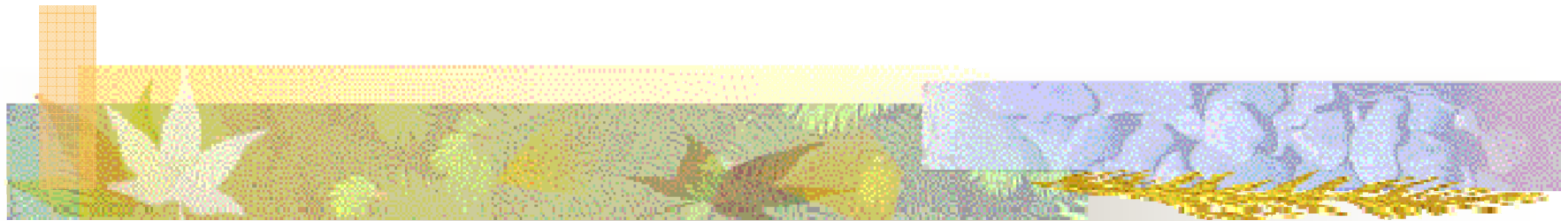


# Scouting Safely in the Grand Teton Council



Alan A. Rogers, Chairman

GSLC – Risk Management/Health & Safety Committee



**Prepared. For Life.™**



# Serious Incidents Occur!

Serious injuries or fatalities have resulted from:

- Automobile accidents
- Falls from elevation
- Cliff diving\*
- Horseplay
- Lightning strikes
- Paintball \*
- Heart attack (adults)
- Climbing & rappelling \*
- Whitewater rafting\*
- Personal watercraft\*
- Snowmobiling
- ATV use\*
- Tunneling in sand
- Hiking

\*Activities requiring specialized training or that are unauthorized or restricted.

# Safety Principles for Scouting Activity Programs



*in the*  
*Grand Teton Council*

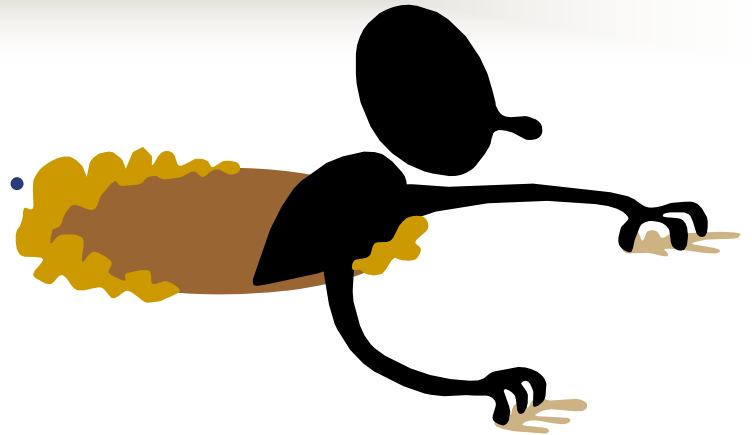
# Safety Principles

that will reduce the risk of incidents, losses,  
and litigation...



...for Scout leaders

# We were gonna.....



- Register...
- File a tour permit...
- Read the *Guide to Safe Scouting's* list of Unauthorized and Restricted Activities...
- Inform parents about our activities...
- Attend basic training & monthly roundtables...
- Provide adequate supervision...
- Protect ourselves...

# Areas to Improve

## ■ Training

### All Units -

- Fast Start
- Basic training
- Wood Badge
- Roundtable

### LDS Units -

- Handbook
- Duty to God
- Priesthood  
Leadership Mtg

## ■ Tenure of Leaders

## ■ Available Time to Serve

## ■ Weigh Activity Purpose vs. Risk



# Principle #1

## Training

- Expectation of training for all leaders
  - Every boy deserves a .....
- Identify training resources
  - Chartered organization
  - Commissioner support
  - Attendance at roundtables
- All leaders required to complete:
  - This is Scouting
  - BSA-Youth Protection training
- Additional training -specific activities
- Consider need and frequency for retraining?



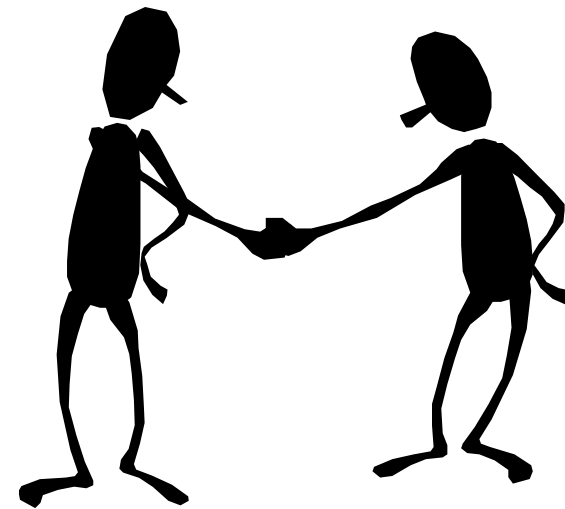


# Principle #2

## “Two-deep” Leadership

(at least two adults for each activity)

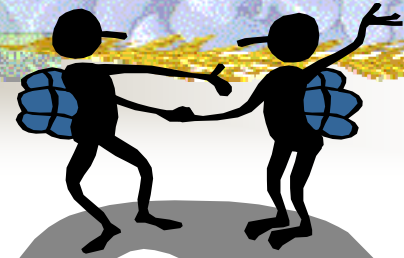
- Required for Scout activities
- At least one registered adult and a parent of a participating Scout
  - One must be 21 or older
  - Never go alone.
  - Safety Rule of Four
- The “Buddy” system protects leaders & youth





# Principle #3

## Tour Plan

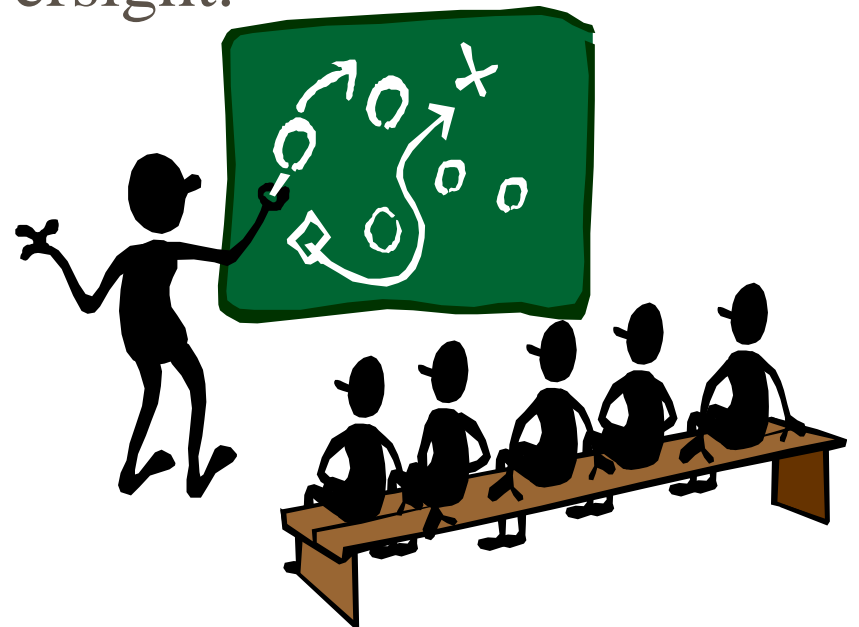


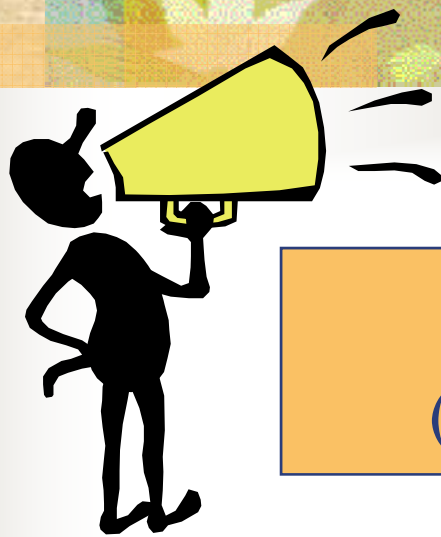
- Replaces tour permits as of 03/01/2011.
- Acts as a safety and preparedness check.
- Must be submitted for council review if:
  - >500 miles or outside local council borders
  - If attending a national or regional camp/event.
  - For specific activities, i.e. aquatics, climbing, shooting sports, etc. (see planning worksheet)
  - For conditions identified by a local council.
- Helps assure BSA liability insurance coverage.

# Principle #4

## Adult Involvement

- Parental knowledge and permission.
  - Permission/informed consent forms.
- Chartered organization oversight.
  - Leaders should ask –
    - When?
    - Where?
    - Who?
    - How?
    - Why?





## Principle #5

### Emergency & Reporting (in case of an injury or accident)

- Have an Emergency Plan – prepared & practiced
- Emergency Contact List
- Notify local authorities, GTC Executive, and Chartered Organizational Representative (If LDS-sponsored unit – contact bishop or stake president)
- LDS units - secondary medical coverage may be available through Church Activity Insurance (CAI).
- Other Units – Health Special Risk  
(if purchased through local council)

# Principle #6

## Use BSA Summer Camps

- Encourage use of official BSA camps, when available.
- Ensures BSA standards and certification.
- Trained staff
- Understand safety, insurance, and indemnity issues.



# Principle #7

## Advance Preparation



- Tour Plan– excellent resource for planning
- Reduces risk of loss or injury
- Promotes safety awareness among leaders and youth
- Reduces risk of litigation involving leaders and BSA
- Prevents disruption to lives of those you serve



# New Resources Available

The screenshot shows a Windows Internet Explorer browser window with the address bar displaying <http://www.scouting.org/scoutsourc/HealthandSafety/Training.aspx>. The browser's menu bar includes File, Edit, View, Favorites, Tools, and Help. The address bar contains the URL and the BSA logo. The browser's Favorites bar shows various folders like AEDs, Church, Internet training, Media, personal, Scouting-related, travel, and Work. The browser's status bar shows the current page is 'Training' and includes icons for Home, Feeds, Read Mail, Print, Page, Safety, Tools, and Help.

The main content area of the browser displays the Boy Scouts of America website. The logo is on the left, and the text 'BOY SCOUTS OF AMERICA' is on the right. Below the logo is a search bar with a 'SEARCH' button. The navigation menu includes Home, Media, Donate, Get Involved, Shop, Sponsors, Youth Protection, and MyScouting. The main navigation bar has tabs for Marketing, Cub Scouts, Boy Scouts, Venturing, Scouting Safety, Outdoor Adventures, and Membership. The current page is 'Training' under 'Scouting Safety'. The page content includes a sidebar with links to SCOUTING SAFELY, Safety Thoughts, Risk Management, Guidelines/Policies, Awards, Training, Forms, Youth Protection, Got Questions?, Health and Safety Alerts, Managing Risk, The Sweet Sixteen of BSA Safety, and Guide to Safe Scouting. The main content area features the following sections:

- Wilderness First Aid**: Learn about the new practices that go way beyond what Scouting leaders may already know as "first aid." Wilderness First Aid training is here, helping you cope with medical emergencies in the wild and, perhaps more importantly, to be a more effective manager in any crisis.
- Physical Wellness Training Video**: Physical Wellness Training was developed to help prepare attendees for the 2010 National Scout Jamboree. It is appropriate for leadership in all program areas and for Boy Scout and Venturing youth.
- Safe Swim Defense**: The Safe Swim Defense is a plan for conducting swimming activities in a safe manner. [Take the Course - link below]
  - Safe Swim Defense Course**: The Safe Swim Defense is a plan for conducting swimming activities in a safe manner.
- Safety Afloat**: Safety Afloat has been developed to promote boating and boating safety and to set standards for safe unit activity afloat. [Take the Course - link below]

The Windows taskbar at the bottom shows the Start button, several open applications (Network C..., Training - ..., Inbox - Mic..., Mini-Phimo..., Microsoft P...), and the system tray with the time 1:37 PM and 97% battery level.

<http://www.scouting.org/scoutsourc/HealthandSafety/Training.aspx>



# New Resources Available

- Revised and updated BSA's "Health & Safety" training presentation
  - Totally self-contained
  - Includes all instructor's notes
  - Incorporates video element directly into the training presentation
  - Includes certificates & cards

<http://www.scouting.org/scoutsource/HealthandSafety/Training.aspx>



# Have I forgotten anything...?

Prior to an activity... ask:

- Are youth and adults properly registered?
- Any specialized training required?
- Are parents informed & permission slips used?
- Is a tour plan required and obtained?
- Have leaders planned for emergencies and provided an advance safety orientation?
- Are leaders familiar with the *Guide to Safe Scouting* and willing to follow the guidelines?





# Know Risk ...not No Risk!!

- The degree of risk in a situation depends on a host of factors that can change from one moment to the next.
- Managing risk often is a matter of considering the "what if" of a situation.
- The best response to risk is to stay out of trouble in the first place. That requires planning, leadership, and an awareness of your surroundings so that you can make good decisions every step of the way.



# Contact Information-

**Alan A. Rogers | Committee Chair**

**Risk Management/Health & Safety Committee**

***BOY SCOUTS OF AMERICA***

***Great Salt Lake Council***

Phone 1-801-596-3541 | Mobile 1-801-597-1014

E-mail [rogersaa@ldschurch.org](mailto:rogersaa@ldschurch.org)



**Prepared. For Life.™**

Any Questions?

